

Summary Analysis of 2008/09 Children in Need Census

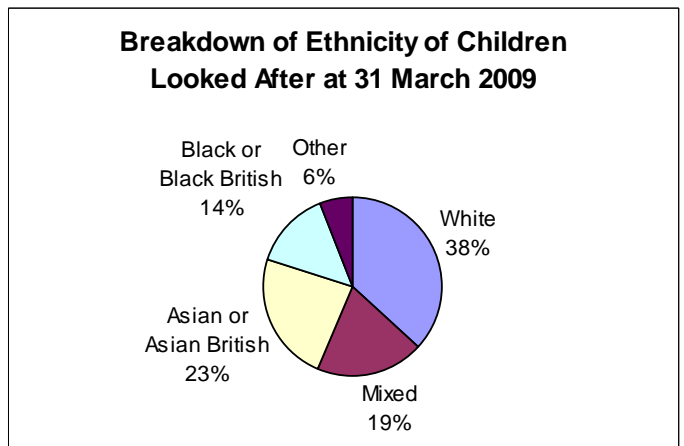
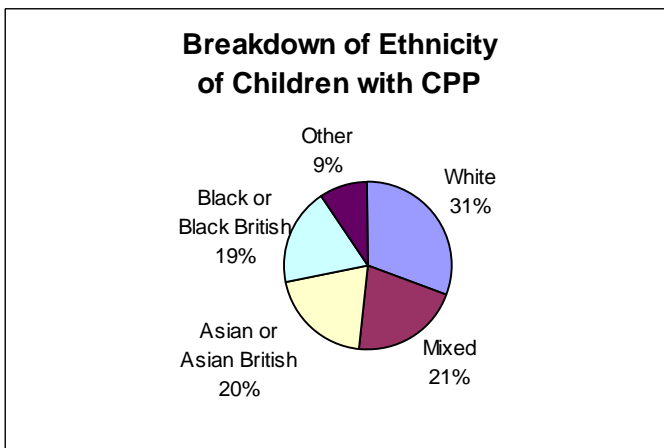
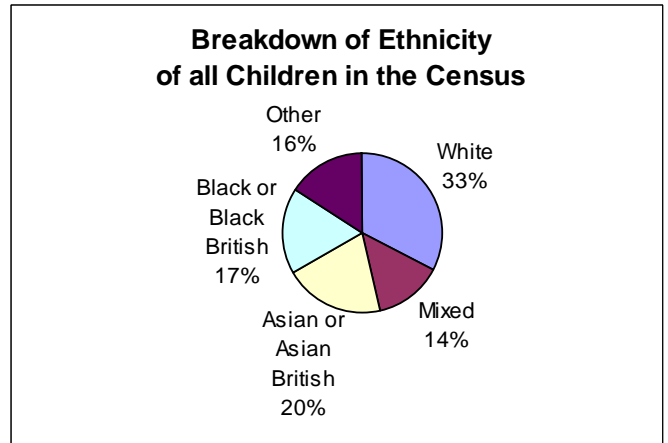
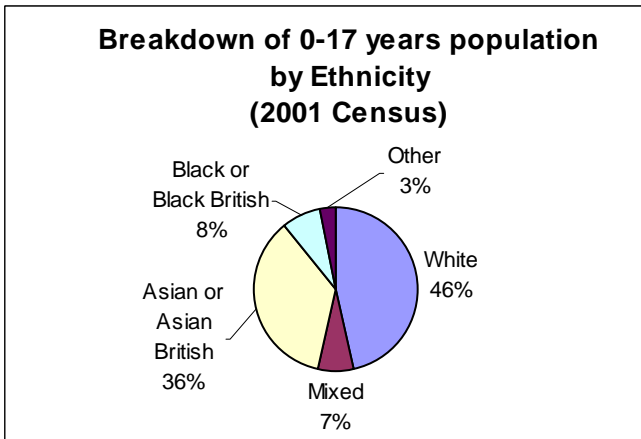
The first collection of the DCSF's new Children in Need (CIN) Census covers a six month period from 1 October 2008 to 31 March 2009.

Total Numbers

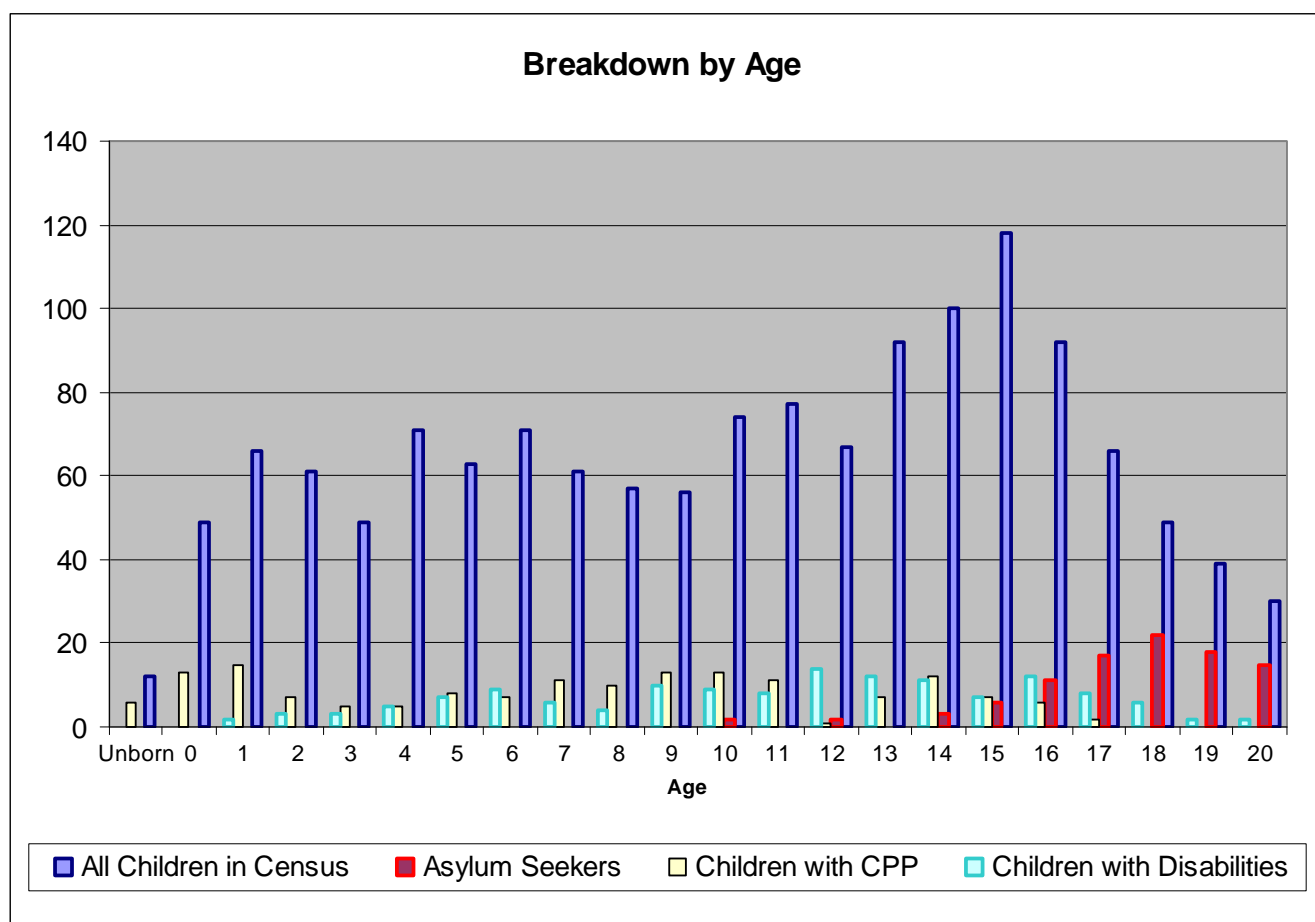
There were 1,420 children's records submitted in the 2008/09 CIN census. Of these:

- 55% are male (44% female, 1% indeterminate or unknown gender – including unborn children)
- 71% are of ethnic minority (defined as non White-British ethnicity). 9% of the children in the CIN Census did not have ethnicity recorded. Reports on children with missing ethnicity have been provided to social worker teams to improve this percentage towards a target of 5%.
- 7% are asylum seeking children (of which 83% are male)
- 11% were subject to Child Protection Plans at the end of the period (31 March 2009)
- 10% have a disability

Breakdown by Ethnicity



Breakdown by Age



Age	Unborn	0	1	2	3	4	5	6	7	8	9	10	11	12	13	14	15	16	17	18	19	20	Total
All Children in Census	12	49	66	61	49	71	63	71	61	57	56	74	77	67	92	100	118	92	66	49	39	30	1420
Asylum Seekers	0	0	0	0	0	0	0	0	0	0	0	2	0	2	0	3	6	11	17	22	18	15	96
Children with CPP	6	13	15	7	5	5	8	7	11	10	13	13	11	1	7	12	7	6	2	0	0	0	159
Children with Disabilities	0	0	2	3	3	5	7	9	6	4	10	9	8	14	12	11	7	12	8	6	2	2	140

Primary Need Codes

The total number of referral episodes in the census is 1,519 (a child may have more than one referral episode in the collection period, and all episodes are counted). Each referral episode has an attached Primary Need Code, which indicates the main reason why a child started to receive services.

The Primary Need Codes used in the census are as follows:

Code	N0	N1	N2	N3	N4
Primary Need	Not stated	Abuse or Neglect	Child disability or illness	Parent disability or illness	Family in acute stress
Code	N5	N6	N7	N8	N9
Primary Need	Family dysfunction	Socially unacceptable behaviour	Low income	Absent parenting	Other cases

Breakdown of Primary Need Codes by Gender

